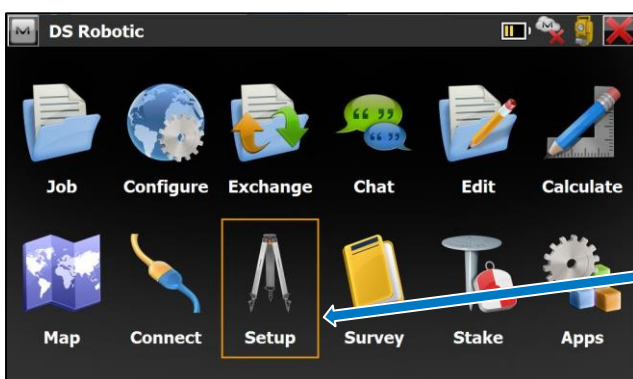


Basic Instrument Set-Up in MAGNET Field: **DS and PS**

Before undertaking an instrument set-up, confirm it is stable, levelled and powered on.

Ensure the instrument and controller are **connected** via LongLINK Bluetooth and the **correct Job** and **Configuration** are selected.

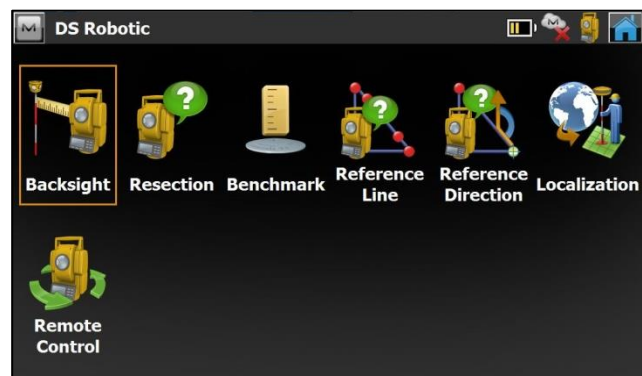


(1)

From the main MAGNET home screen, select the **Setup** menu button.

(2)

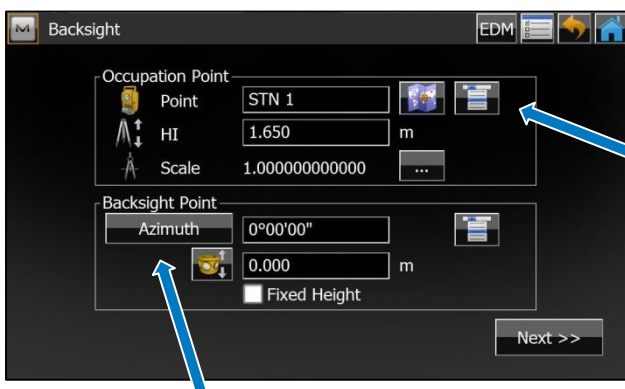
From here, select the **Backsight** button.



(3)

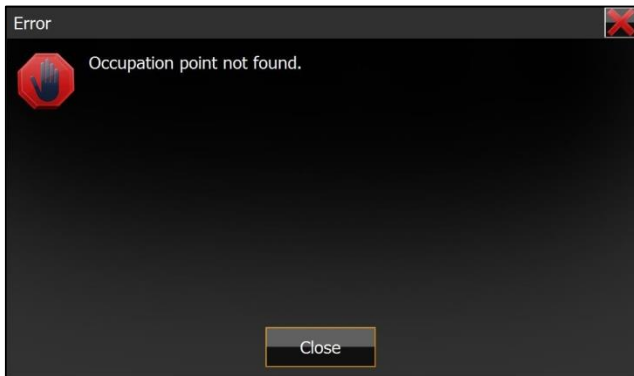
Enter an **Occupation Point** name OR press the **List** icon to choose another previously recorded point.

In all cases be sure to enter the **Instrument Height** each time.



The Backsight can be set by **Azimuth** or by **Point name**. Press the rectangular button to select either method.

Ensure that the **Height** of the **Backsight Point** is entered.



(4)

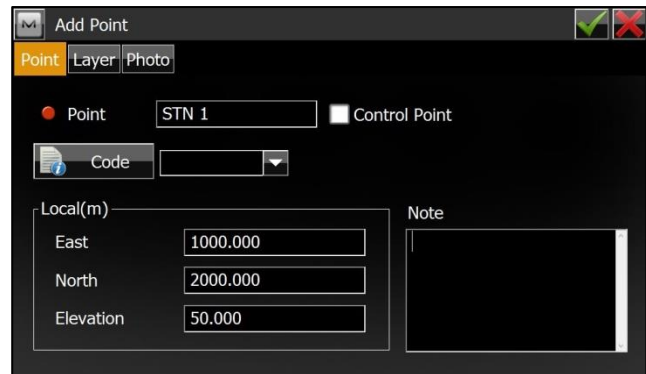
If setting up over a **New** point, this message will be displayed.

Press Close.

(5)

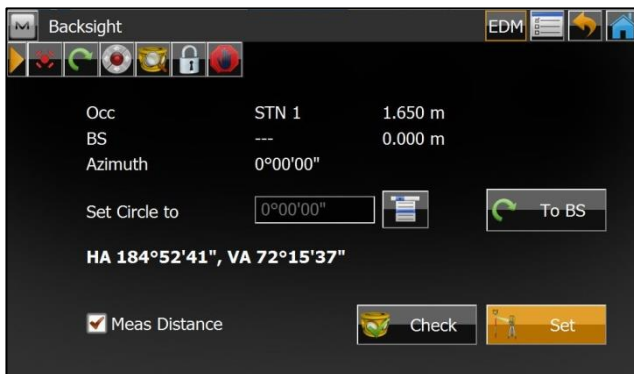
Enter the new **Occupation Point name** and associated **Coordinate values**.

Press the Green Tick at the top right of the screen.



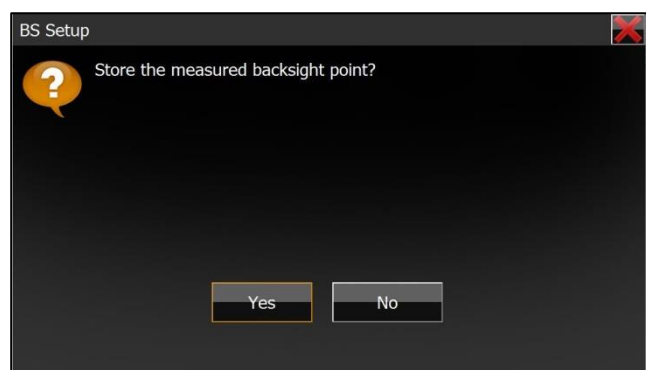
(6)

Sight instrument to the proposed Backsight target and press **Set**.



(7)

Press **Yes** to store the measured Backsight point.





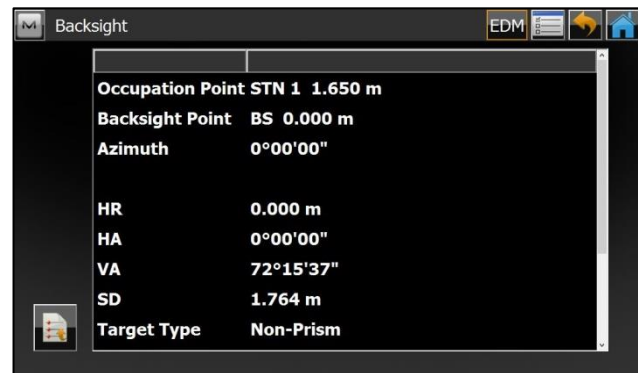
(8)

Enter the new **Backsight Point name** and press the Green Tick at the top right to store the coordinate data.

(9)

Backsight data is then displayed for review.

Press the Home button at the top right to return to the main MAGNET screen.



(10)

From here continue into the **Survey** or **Stake** menus and work as required.

